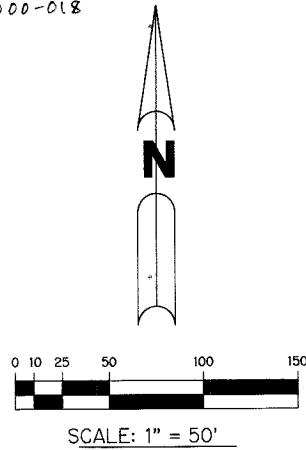


# BOCA LYONS SHOPPING PLAZA M.U.P.D.

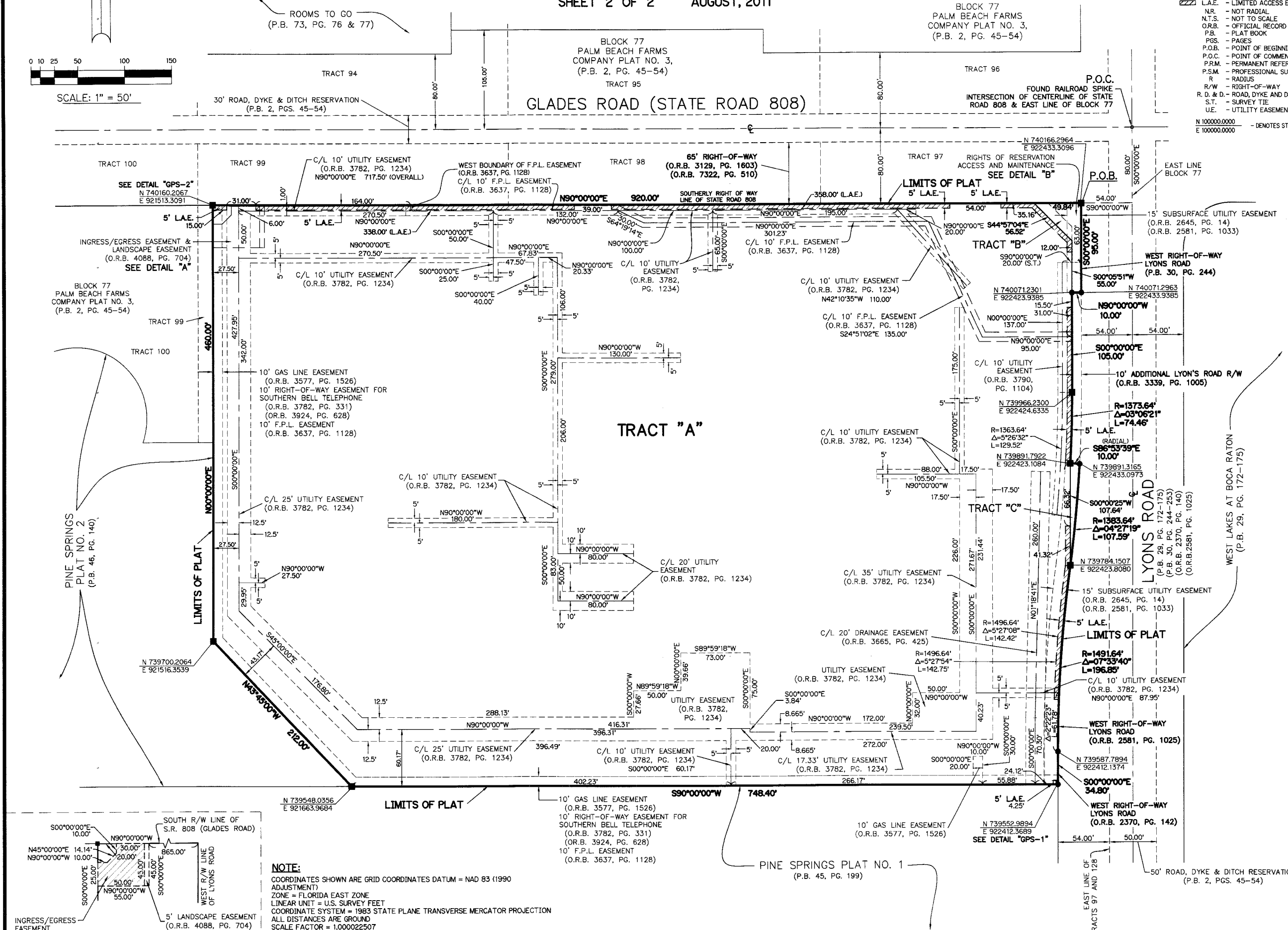
BEING A REPLAT OF A PORTION OF TRACTS 97, 98, 99, 126, 127 AND 128, BLOCK 77  
PALM BEACH FARMS CO. PLAT NO. 3, AS RECORDED IN PLAT BOOK 2, PAGES 45 THROUGH  
54, ALL OF THE PUBLIC RECORDS OF PALM BEACH COUNTY, FLORIDA  
LYING IN SECTION 18, TOWNSHIP 47 SOUTH, RANGE 42 EAST

SHEET 2 OF 2 AUGUST, 2011

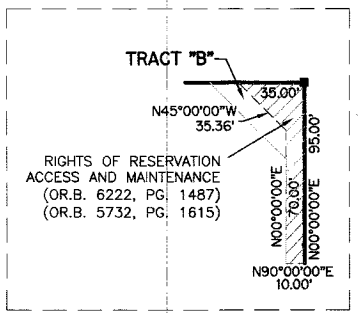


- LEGEND:**
- - SET PERMANENT REFERENCE MONUMENT, CONCRETE MONUMENT WITH DISK STAMPED "P.R.M. L.B. #7741"
  - - SET PERMANENT REFERENCE MONUMENT, NAIL AND DISK STAMPED "P.R.M. L.B. #7741"
  - Δ - DELTA ANGLE
  - B.E. - BUFFER EASEMENT
  - CB - CHORD BEARING
  - CD - CHORD DISTANCE
  - C/L - CENTERLINE
  - D.E. - DRAINAGE EASEMENT
  - F.P.L. - FLORIDA POWER & LIGHT
  - L - ARC LENGTH
  - L.A.E. - LIMITED ACCESS EASEMENT
  - NR - NOT RADIAL
  - N.T.S. - NOT TO SCALE
  - O.R.B. - OFFICIAL RECORD BOOK
  - P.B. - PLAT BOOK
  - PGS. - PAGES
  - P.O.B. - POINT OF BEGINNING
  - P.O.C. - POINT OF COMMENCEMENT
  - P.R.M. - PERMANENT REFERENCE MONUMENT
  - P.S.M. - PROFESSIONAL SURVEYOR AND MAPPER
  - R - RADIUS
  - R/W - RIGHT-OF-WAY
  - R.D. & D. - ROAD, DYKE AND DITCH RESERVATION
  - S.T. - SURVEY TIE
  - U.E. - UTILITY EASEMENT
- N 1000000.0000  
E 1000000.0000 - DENOTES STATE PLANE COORDINATES

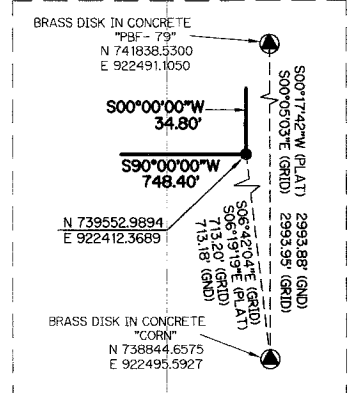
# 118



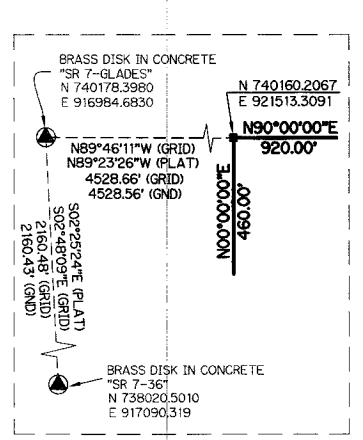
THIS INSTRUMENT PREPARED BY  
PERRY C. WHITE, P.S.M. 4213, STATE OF FLORIDA  
SAND & HILLS SURVEYING, INC.  
8461 LAKE WORTH ROAD, SUITE 410  
LAKE WORTH, FLORIDA 33467  
LB-7741



**DETAIL "B"**  
N.T.S.

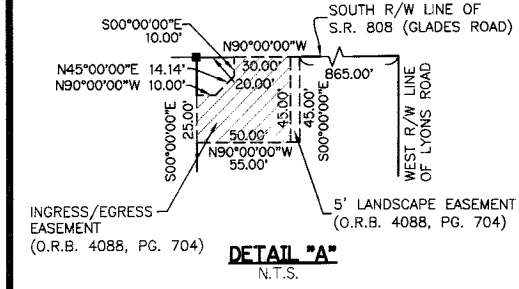


**DETAIL "GPS-1"**  
N.T.S.



**DETAIL "GPS-2"**  
N.T.S.

**NOTE:**  
COORDINATES SHOWN ARE GRID COORDINATES DATUM = NAD 83 (1990 ADJUSTMENT)  
ZONE = FLORIDA EAST ZONE  
LINEAR UNIT = U.S. SURVEY FEET  
COORDINATE SYSTEM = 1983 STATE PLANE TRANSVERSE MERCATOR PROJECTION  
ALL DISTANCES ARE GROUND  
SCALE FACTOR = 1.000022507  
PLAT BEARING IN 90°00'00" E = GRID BEARING IN 89°37'15" E  
ROTATE 00°22'45" COUNTER CLOCKWISE (PLAT TO GRID)



**DETAIL "A"**  
N.T.S.